

# South Downs Local Plan: Preferred Options

## Farmers' Breakfast

Tim Slaney, Director of Planning



# South Downs Local Plan

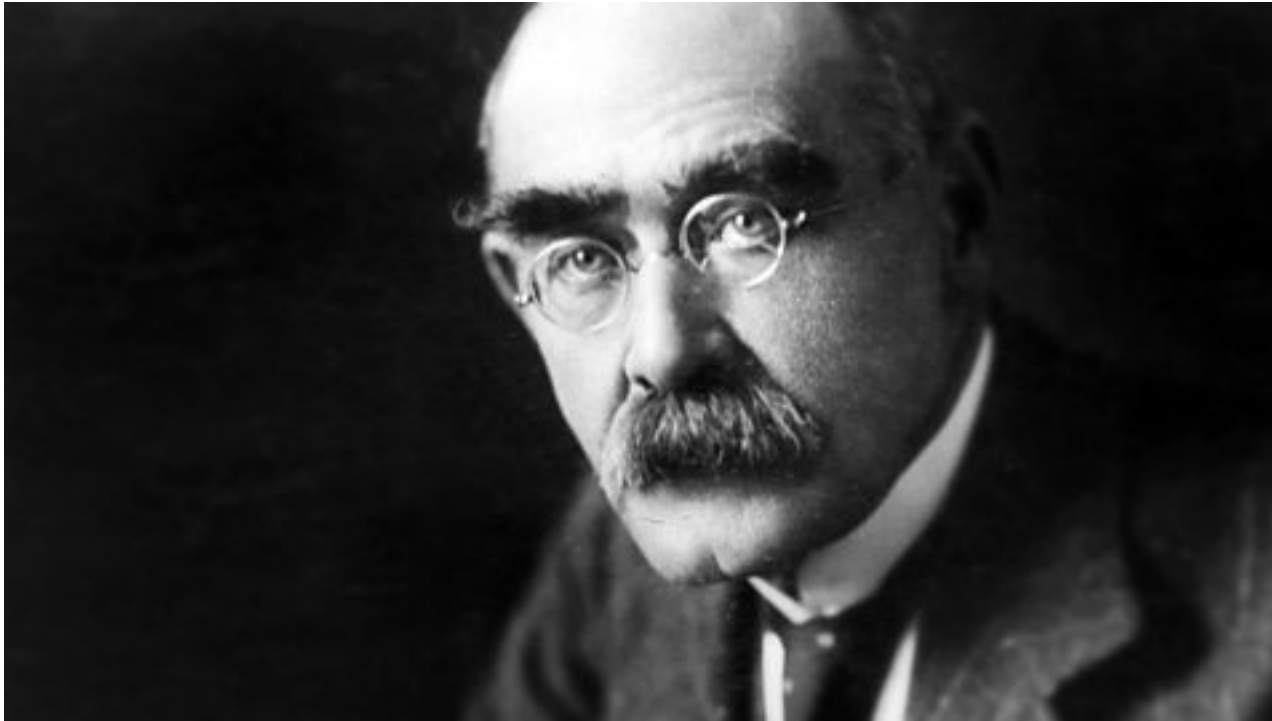
- Initial feedback on Preferred Options consultation
- Detailed feedback on agricultural policies
- Sites and settlements
- The way ahead



# South Downs Local Plan

- Approximately 400 individuals and organisations made approximately 2,640 individual representations on the Local Plan.
- 77% of people who expressed an opinion supported or supported with changes Local Plan policies and/or chapters.









# South Downs Local Plan



## **Policy SD22(4)**

4. Development proposals within estates and large farms that support appropriate diversification, which may not otherwise be considered acceptable outside of settlement boundaries, may be exceptionally considered suitable providing that they clearly meet the following criteria to the satisfaction of the Authority:

- a) The development proposals comply with other relevant policies and are part of a comprehensive Estate or Farm Plan that conserves and enhances the landscape; and
- b) The development proposals as part of an estate or farm plan deliver multiple benefits in line with the Purposes and Duty and the special qualities of the National Park and in regard to ecosystem services.



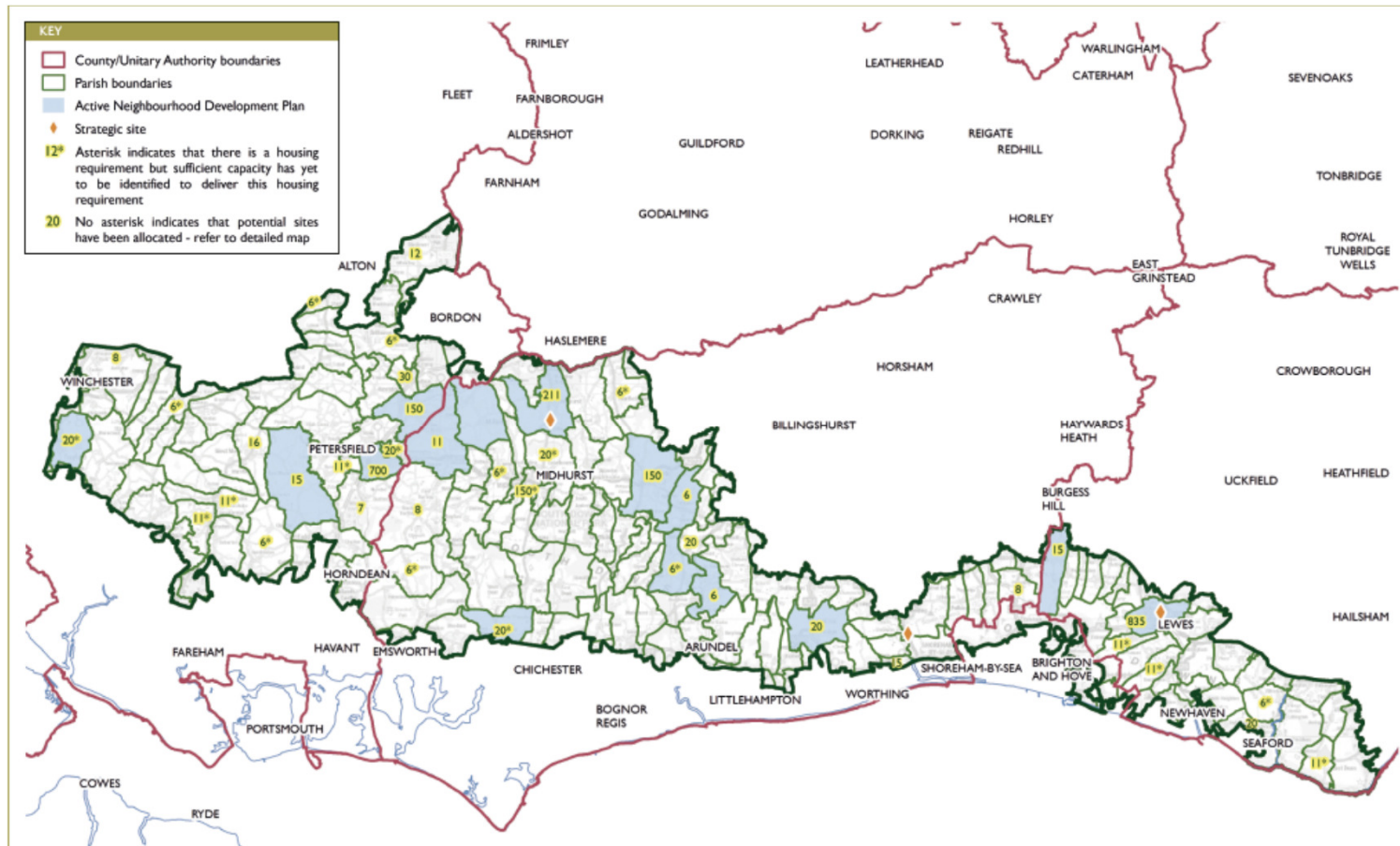
# South Downs Local Plan



- Development Management Policy SD46: Agriculture and Forestry
- Development Management Policy SD47: Farm Diversification
- Development Management Policy SD48: Agricultural and Forestry Workers' Dwellings
- Development Management Policy SD49: Conversion of Redundant Agricultural Buildings



# Sites & Settlements: Park-wide





# South Downs Local Plan



| Local Plan stage                 | Regulation | Date        |
|----------------------------------|------------|-------------|
| Issues and Options               | 18         | Spring 2014 |
| Preferred Options                | 18         | Autumn 2015 |
| Publication version              | 19         | Autumn 2016 |
| Submission to Secretary of State | 22         | Winter 2017 |
| Examination                      | 24         | Spring 2017 |
| Adoption                         | 26         | Mid 2017    |

