

South Downs Local Plan

Lucy Howard, Planning Policy Manager

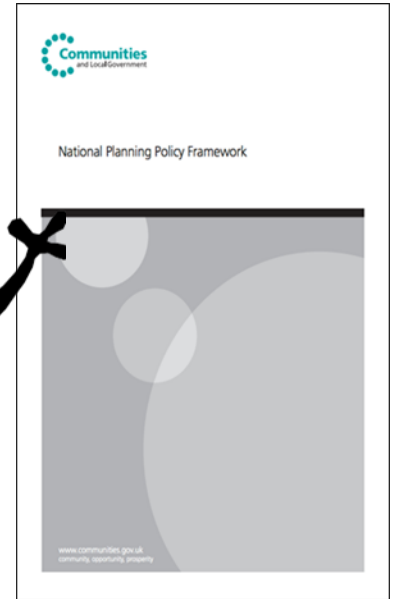
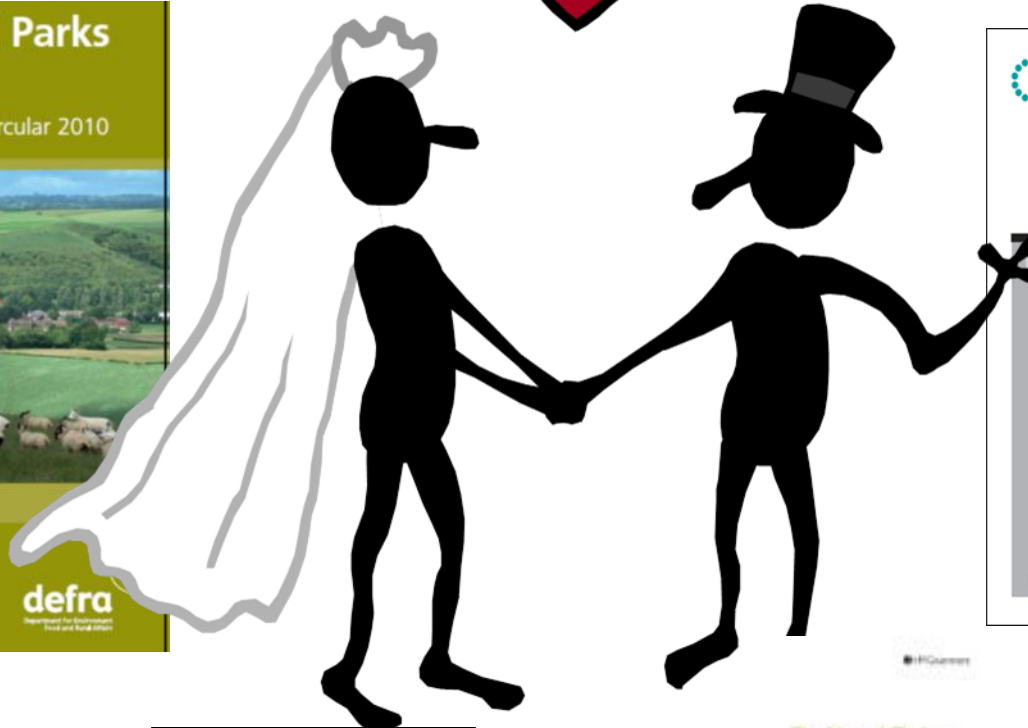
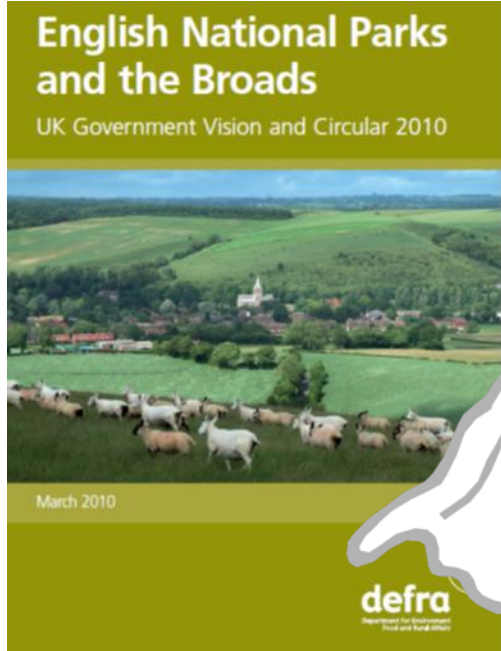


Local Plan

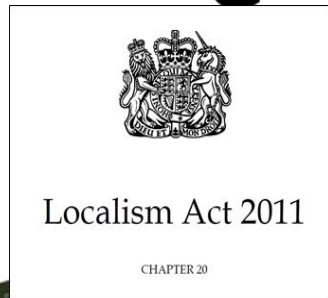
- What is special about this Local Plan?
- An outline of the South Downs Local Plan
- Policies of particular interest to the SDLM
- Progress to date and your input



The Arranged Marriage



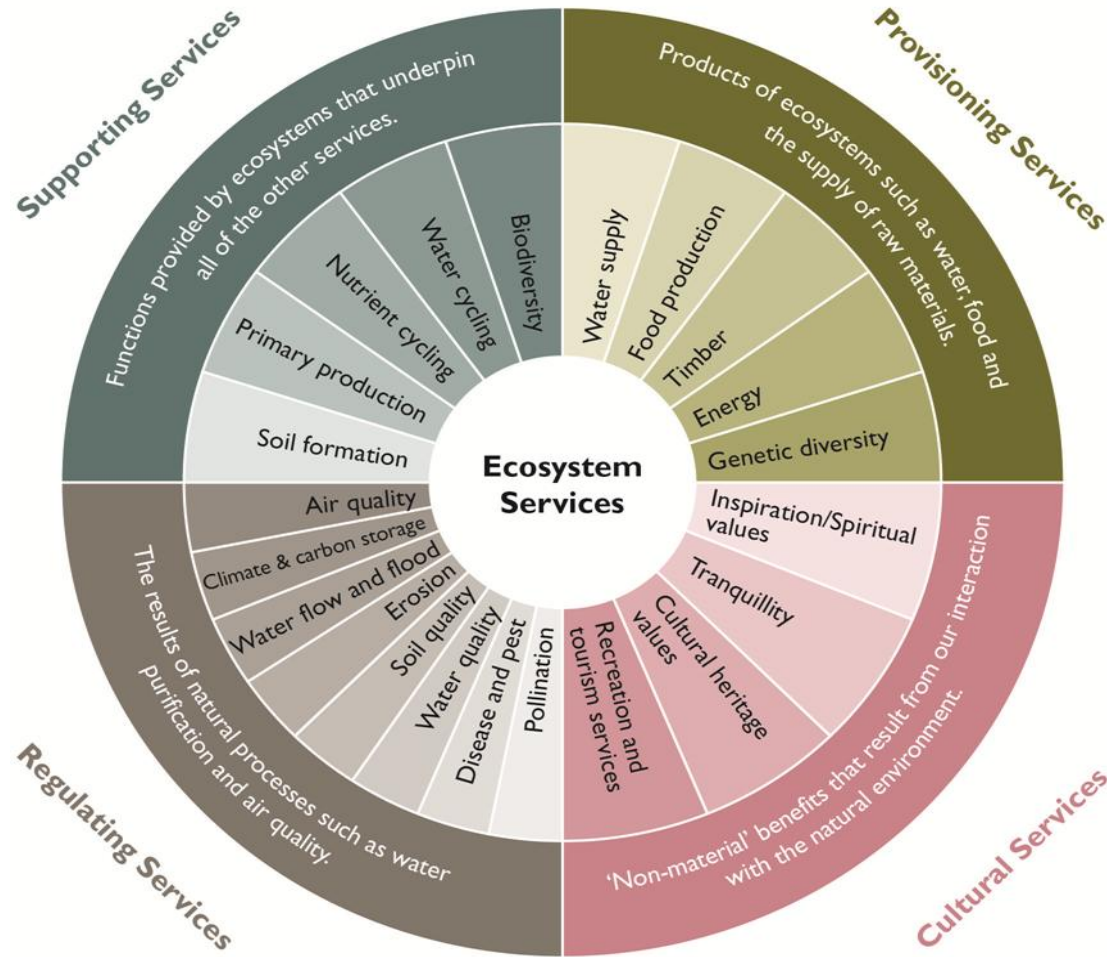
#10 Downing



The Natural Choice:
securing the value
of nature

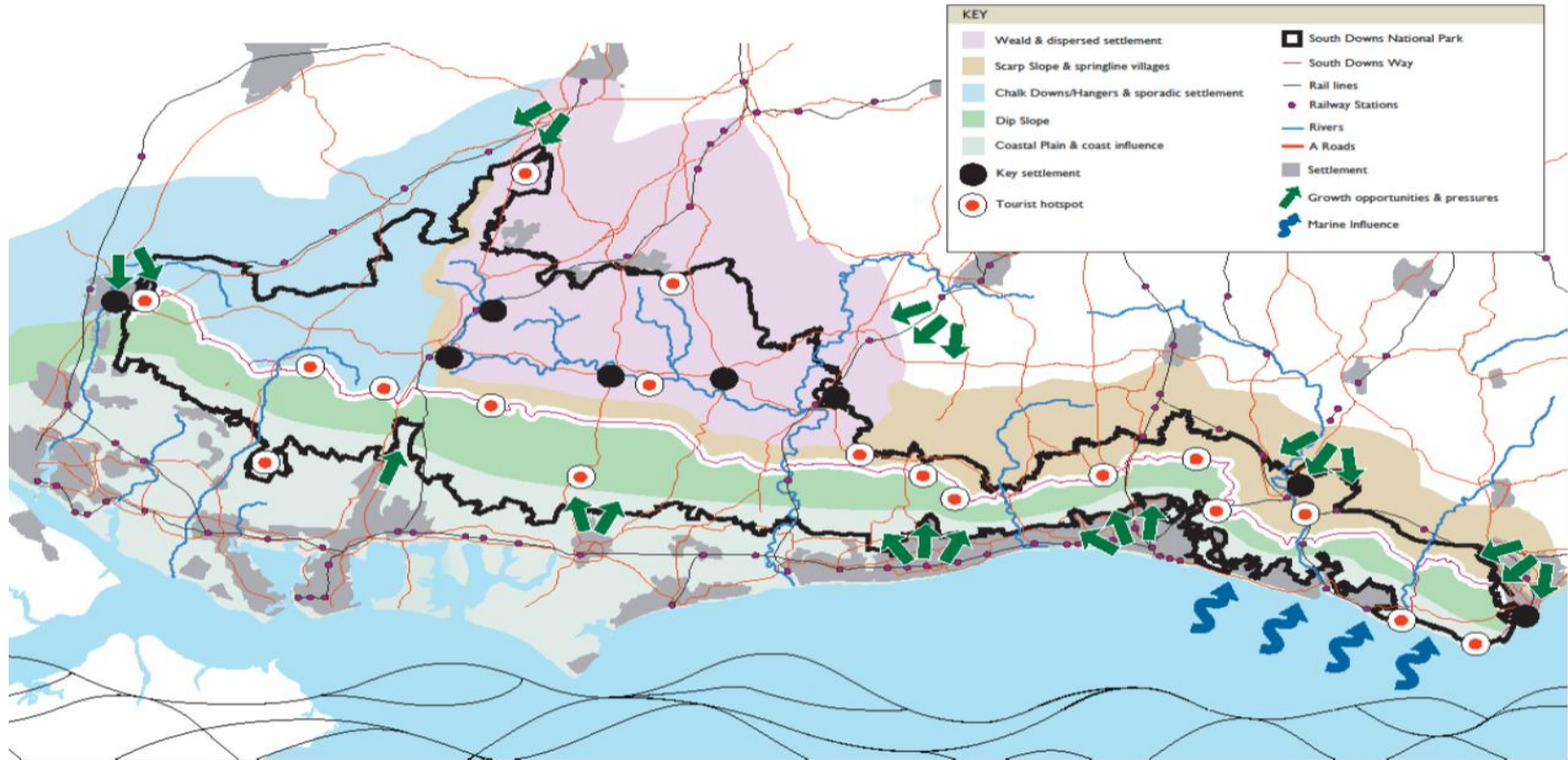


Ecosystem Services



BROAD SPATIAL DIAGRAM

SOUTH DOWNS NATIONAL PARK



Structure of Local Plan

- Partnership Management Plan
- A single Local Plan for planning policy in the National Park
- Core, strategic, allocation and development management policies



Policies of Particular Interest to SDLM

- Policy SD22: Development Strategy
- Policy SD27: Sustaining the Rural Economy
- Policy SD45: Agriculture and Forestry
- Policy SD46: Farm Diversification
- Policy SD47: Rural Workers' Dwellings
- Policy SD48: Conversion of Agricultural Buildings



Local Plan Timetable

Preferred Options consultation (subject to approval by the NPA)

2 September – 28 October 2015

- Publication Version: Summer 2016
- Submission: Autumn 2016
- Examination in Public: Early 2017
- Adoption: 2017



Any questions?

